



SeedCount

Image Analyser for Grains and Seeds

SeedCount and CornCount are digital imaging systems specifically designed for the grain industry. They use software and flatbed scanner technology to rapidly and accurately analyse a sample of grain and determine its physical characteristics. They generate detailed data tables that can be exported to any spreadsheet or database program and provide this detailed information without damaging the grain sample.

SeedCount and/or CornCount are for use by anyone who grows, sells, buys or uses grain and/or assesses its quality. Potential users are breeders, brewers, dealers, growers, food processors, maltsters, millers, etc.

SeedCount

SeedCount consists of a reflectance scanner and is currently offered for barley, wheat, rice and corn analysis.

CornCount

CornCount consists of two scanners, i.e., an incident (reflectance) based scanner (i.e., a SeedCount scanner) and a transmission based scanner (Epsom V500 scanner). A corn tray is used in a reflectance mode to measure size, i.e., length, width, area, crowns, dents and colour. A transmission tray is used to detect stress cracks and Horneous Endosperm.



Figure 6: Filling the Tray

Operation

A sample is loaded into tray which is then placed into the scanner. The image of the tray and seeds are loaded into the SeedCount Touch Pad PC and the software performs the appropriate image analysis for the specific type of seeds or grain.



Wheat	Barley	Maize)	Rice
Ave Kernel Area	Ave Kernel Area	Ave Kernel Area	Ave Kernel Area
Ave Kernel Length	Ave Kernel Length	Ave Kernel Length	Ave Kernel Length
Ave Kernel Width	Ave Kernel Width	Ave Kernel Width	Ave Kernel Width
Seed Count	Seed Count	Seed Count	Seed Count
KKW	KKW	KKW	KKW
Dockage %	Dockage %	Dockage	Dockage
Plumpness	Plumpness	Red Streak	Chalkiness
Blacktip	Blackpoint	Crowns	Whiteness
		Dents	Discoloured Seeds
		Stress Cracks	
		Horneous Endosperm	

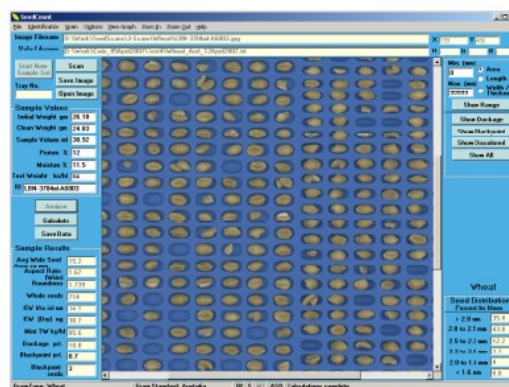


Figure 3: The Main SeedCount Screen

SeedCount Features

- Analyse up to 1000 seeds in less than 30 secs
- Measures physical dimensions, colour and Colour defects, broken and cracked grains as well as grain specific parameters
- Customise the data screen
- Display graphs and plots