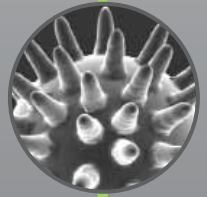
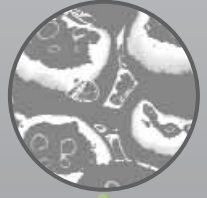


# REACH-IN CO<sub>2</sub> INCUBATOR



CARON

## LARGE CAPACITY CO<sub>2</sub> INCUBATOR

CARON's large capacity Reach-In CO<sub>2</sub> Incubator provides the ideal environment for small to large scale, high volume cell culture.

This 30 cu. ft. unit provides precise control of temperature, relative humidity and CO<sub>2</sub>, and offers the latest technology in sensors, including infrared (IR) CO<sub>2</sub>. Our control and uniformity parameters rival any conventional benchtop incubator, providing maximum culturing space in a minimal footprint.

CARON controls humidity by monitoring and injecting water, eliminating the infamous humidity pans found in other units which result in contamination and corrosion caused by standing water.

## STANDARD FEATURES

- Temperature range of 5°C above ambient to 60°C is controlled with a drift-resistant RTD sensor.
- Humidity is controlled from ambient to 95% RH utilizing a capacitive sensor. No humidity pan is needed. Water is injected on an as-needed basis to maintain a precisely controlled environment.
- Humidity levels can be controlled at any temperature setpoint without recalibration.
- The CO<sub>2</sub> range of 0 to 20% is controlled through the use of an IR (infrared) sensor. IR CO<sub>2</sub> sensors are much more stable and drift resistant than conventional T/C (thermal conductivity) sensors used by other manufacturers.
- The IR CO<sub>2</sub> sensor is not affected by temperature or humidity changes, allowing the chamber to recover CO<sub>2</sub> levels without waiting on temperature and humidity. Systems with IR sensors typically recover CO<sub>2</sub> as much as 10 times faster than those with T/C sensors.
- CARON's carefully designed horizontal airflow system generates evenly distributed airflow across all shelf locations. Maximum uniformity and rapid recovery are maintained even under heavy cabinet loads.
- Sliding stainless steel shelves are easily adjustable to facilitate handling of your product, and allow easy access to samples at the rear of the chamber.
- Stainless steel interior is easily cleaned and highly resistant to corrosion.

## STANDARD FEATURES CONTINUED

- The ergonomically designed door handle allows easy access into the chamber.
- Heated, triple-pane glass door minimizes condensation on the door for a clear view of your valuable samples, and aids in rapid temperature recovery.
- Lockable control panel minimizes the possibility of unauthorized access.
- Two access ports, one on each side of the chamber, make validation easy and provide you easy access to connect instrumentation.

## SET IT AND FORGET IT!

CARON's Reach-In CO<sub>2</sub> Incubators can be factory pre-programmed with setpoints for temperature, humidity, and CO<sub>2</sub>. After final connections are made at your facility, power can be turned on with nothing more to do. Just set it and forget it!

## STANDARD ACCESSORIES

CARON's Reach-In CO<sub>2</sub> Incubator is easily configured by selecting from a variety of accessories.

Our environmentally-friendly Condensate Recirculating System conditions readily available tap water, recycles it, and eliminates the need for a floor drain. Our ergonomically designed Inner Door Kit and other optional accessories allow you to purchase options that are pertinent to your particular application, while minimizing the cost.

CARON offers a variety of optional validation services from IQ/OQ protocols to full on-site IQ/OQ/PQ validation. Please contact our Customer Service Department for complete details.



# SPECIFICATIONS

MODEL	6034-1
Temperature Range	5°C above ambient to 60°C
Temperature Control	± 0.1°C
Temperature Uniformity	± 0.3°C at 37°C
Temperature Sensor	RTD
Humidity Range	Ambient to 95% RH
Humidity Control	± 2.0%
Humidity Sensor	Capacitive
CO <sub>2</sub> Range	0 to 20%
CO <sub>2</sub> Control	± 0.1%
CO <sub>2</sub> Sensor	Infrared
Interior Dimensions	30.0" W x 27.5" D x 63.5" H (76.2cm W x 69.9cm D x 161.3cm H)
Interior Construction	Type 304, 2B Finish, Solid Stainless Steel
Exterior Dimensions	35.5" W x 33.5" D x 90.3" H (90.2cm W x 85.1cm D x 229.4cm H)
Exterior Construction	Cold Rolled Steel, Powder Coated
Work Space	30 cu. ft. (850 liters)
# of Shelves	5 Standard; 30 Maximum Capacity
Shelf Construction	304 Stainless Steel, Wire Rod, Sliding
Shelf Dimensions	29.3" W x 26.5" D (74.4cm W x 67.3cm D)
Electrical	115V, 60 Hz, 20 Amp (NEMA 5-20P Plug)
Shipping Weight	700 lbs.

Specifications are subject to change without notice.

# OPTIONAL ACCESSORIES

STOCK NO.	DESCRIPTION
CRSY102	Universal Condensate Recirculating System. In-line DI cartridge, carbon block filter, anti-bacterial stick, 7 gallon water tank, low water alarm, and recirculation pump.
GASG101	CO <sub>2</sub> Gas Guard. Allows two CO <sub>2</sub> tanks to be connected to a Model 6034. Automatically switches from the primary to the secondary tank when low gas pressure is detected.
REGL101	CO <sub>2</sub> Tank Regulator. Two stage with input range of 0-2000 PSI and output range of 0-30 PSI. Dual pressure gauges with barbed hose connection. Equipped with a rotary shutoff valve.
SHLF123	Extra Perforated Stainless Steel Shelf Kit. Includes one stainless steel perforated shelf, two shelf rails, and four shelf clips.
ALRM203	Alarm Contacts (Temp, RH, CO <sub>2</sub> ). Provides NO and NC dry contacts for temperature, humidity and CO <sub>2</sub> alarms.
COMM101	RS485 Communications. Provides communications interface to temp, RH and CO <sub>2</sub> controllers. Requires 3rd party or custom software to enable communications.
OUTP101	0-5V Analog Outputs. Provides connections for monitoring displayed temp, RH and CO <sub>2</sub> values.
OUTP102	4-20mA Analog Outputs. Provides connections for monitoring displayed temp, RH and CO <sub>2</sub> values.
LOCK101	Outer Door Lock.
DOOR601	Lexan Inner Door Kit. Divides the chamber into five equally sized zones. Minimizes chamber interruption during a door opening.
DOOR505	Solid Light Tight Door Cover.
RCDR107	Temperature Recorder. Single pen, 7 day, 10 inch circular chart.
RCDR103	Temperature/Humidity Recorder. Dual pen, 7 day, 10 inch circular chart.
RCDR110	Built-in Temperature Recorder. Single pen, 7 day, 6 inch circular chart.
RCDR111	Built-in Temperature/Humidity Recorder. Dual pen, 7 day, 6 inch circular chart.
SFTW102	Windows-based Watlow Communications Software for Data Logging.

5M, 8/06



PO Box 715 • Marietta, OH 45750  
 Phone: 800-648-3042 • 740-373-6809  
 Fax: 740-374-3760  
[www.caronproducts.com](http://www.caronproducts.com)  
[sales@caronproducts.com](mailto:sales@caronproducts.com)